

SWAINS ISLAND, AMERICAN SAMOA: Joel Fassler has submitted some items from his collection. Joel collects covers from U.S. Islands whether or not they have Post Offices. Swains Island has never had a post office. Geographically one of the Tokelau Islands the story of its incorporation in American Samoa appears on page 275 of Robert T. Murphy's "A Postal History/Cancellation Study of the U.S. Pacific Is." Illustrations 4/7, 4/8 & 4/9 show use of the cachet recorded by Robert Murphy as known between May 16 1931 and Feb. 28 1934. Joel has a number of duplicates of 4/9 which he says are philatelically inspired and contain stamp advertisements. Contact Joel at P.O. Box 28414, Washington DC 20038-8414. Illustration 4/10 is a more recent example. The letter has been reduced in size to fit the page.

*Joel Fassler*  
SWAINS ISLAND

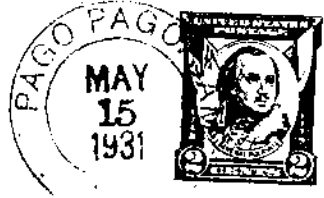


Illustration 4/7.  
May 15 1931 via Pago Pago  
This brings forward Robert  
Murphy's known dates for  
the cachet by one day.

Miss Emilie J. Diefenderfer,  
828 Third Street,  
Fullerton, Pa.

*Paul T. Diefenderfer*  
SWAINS ISLAND



Illustration 4/8  
May 15 1931 via  
Pago Pago

Mrs Paul r. Diefenderfer,  
Pago Pago, Tutuila,  
American Samoa

*F. B. Jennings*  
SWAINS ISLAND



Illustration 4/9  
via Apia and San Francisco CA.  
Joel has duplicates of this item.

Erwin Strasser  
317 Superior Bldg.  
Cleveland, Ohio