

REPUBLIC OF THE MARSHALL ISLANDS

THE BIKINI ATOLL POSTMARKS OF 1986: George M. Baka makes the following comments on the item appearing in the December, 1995 edition of the Bulletin (# 11) "The 1 July 1986 datestamp was produced to mark the First Day of Issue of the "Operation Crossroads" set of 4 stamps and one souvenir sheet. It appears that 55 is the correct number of covers serviced by Paul Filipkowski and carried to Bikini by Dr. Stone. The reverse of the illustration 11/1 covers are numbered "# / 55" and signed by Mr. Filipkowski. Of the 55, it does not appear as if very many were sold. When I purchased the remainder of these covers in a L.D. Mayo auction after Mr. Filipkowski's death, there were 39 covers in the lot. All of these covers are cancelled in black ink which was usually the case with the Marshall Islands Philatelic Bureau. However I have seen other covers of this issue cancelled with magna ink. According to Mr. George Machado this is often a trademark of those covers cancelled in Majuro! If we can confirm that this is the case it may be that a 1 July 1986 Bikini datestamp was in the Marshall Islands - at Majuro (though obviously not at Bikini). More research is obviously needed here." Readers comments would be most welcome!

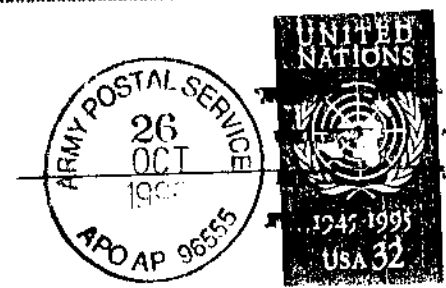


Illustration 12/22



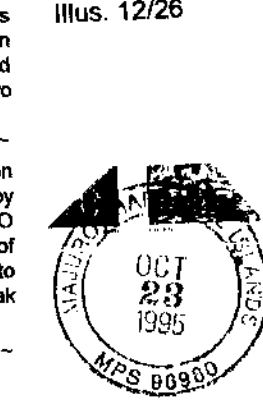
Illustration 12/23



Illus. 12/24



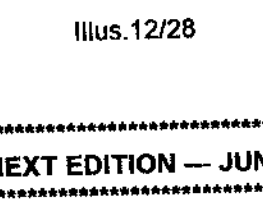
Illus. 12/25



Illus. 12/26



Illus. 12/27



Illus. 12/28

BIKINI & ENEWETAK AIR SERVICES: Bernd Neuhaus has kindly sent a copy of the current AIR MARSHALL ISLANDS, Inc. flight schedule. This indicates a weekly flight, each Monday, to Bikini & Enewetak. The flight leaves Majuro at 06.00 hrs and proceeds to Kili (where most Bikini Islanders currently live). It then returns to Majuro, departing again at 09.30 for Kwajalein, Enewetak, and Bikini. Approximately 40 minutes is spent at each location. The plane then returns to Majuro via Kwajalein. This seems to indicate that some activity is taking place on the atolls which involve the Bikini people. The inclusion of Kwajalein in the schedule may indicate that U.S. or Kwajalein based scientists are also regularly visiting the atolls - or may just indicate a convenient refuelling stop. The flight schedule indicates that virtually every inhabited atoll in the Marshall islands is scheduled to receive at least one plane each week.

KWAJALEIN APO AP 96555: Bernd Neuhaus has sent a copy of a 4-Bar from this office dated 26 Oct. 1995. See illustration 12/22. This is very similar to illustration 9/17 (Bulletin # 9) but Bernd draws attention to the position of "ARMY" in relation to a line drawn along the top of the second bar from the bottom. Bernd suggests that at least two of each new datestamp are ordered by APO AP 96555 and while produced at the same time can be slightly different. Illustration 9/17 is reproduced here as illustration 12/23 for comparison.

Bernd also reports a double circle reading "ARMY POSTAL SERVICE/APO AP 96555 COPE" dated 26 October, 1995. This is shown here as illustration 12/24. This may not reproduce clearly due to the dark colour of the stamp. This was first seen used during October, 1994 but with the actual date unclear. A similar datestamp but showing the Zip as APO SE 96555 is shown in "Bulletin # 2 as illustration 2/19. It is believed that "COPE" is the abbreviation of "Custodian Of Postal Effects".

Another contribution from Bernd shows a new double circle "DIRECTORY SERVICE GIVEN /APO AP 96555", dated Oct 11, 1995. See illustration 12/25.

Bernd also reports use on 4 August, 1995 of a "REGISTERED POSTAL SERVICE/APO AP 96555" double circle similar to that shown in issue # 2 as illustration 2/26. This, however, appears to be a new datestamp - note the space between "REGISTERED" & "APO" and between "96555" & "SERVICE". This datestamp appears on a returned registered packet. The datestamp is shown here as illustration 12/26.

MAJURO MH 96980: In Edition # 10 of the "Bulletin" a double circle datestamp with the date misplaced in relation to the lettering was shown as illustration 10/11. It was suggested that this was the datestamp shown in Bulletin # 7 as illustration 7/7 but with the lettering misplaced in relation to the date when reglued following damage. Bernd Neuhaus has submitted photocopies of Majuro Double Circle datestamps used on March 21, 1995 and October 23, 1995. The latter date has the date correctly aligned in relation to the lettering. Bernd believes it to be unlikely that the glue on illustration 10/11 has failed for a second time and suggests that there is now proof that Majuro hold two of this type of double circle. The two datestamps are shown here as illustration 12/27 and 12/28.

ENEWETAK APO 96333: APO 96333, which served the U.S. Military and Civilian workers on Enewetak, closed on 28 March, 1980. Following that date mail from the island was sent to Hawaii by pouch for cancellation. Has anyone examples of this mail for illustration in the "Bulletin"? An APO 96333 cancellation, but unlike any illustrated in Robert T. Murphy's "A Postal History/Cancellation Study of the U.S. Pacific Islands", was used in 1986 - But Where? In a future edition of the "Bulletin" I intend to look at mail from Enewetak after March, 1980. I would appreciate photocopies of anything from Enewetak you have in your collection dated after March, 1980.

→→→→→ The "U.S. PACIFIC ISLANDS BULLETIN" is a non profit making publication issued 4 times each year. contact uspibulletin@hoimail.com for further information. The Bulletin will be sent on receipt of a contribution to cover the cost of postage, paper and copying. For each copy send 50p for U.K. addresses, 60p for addresses in the rest of Europe or U.S.\$1.25 (85p) for addresses in the rest of the world. (Annual Contribution - 4 copies - £2 U.K., £2.40 Europe, or U.S.\$5 (£3.40 Sterling) Rest of World) (From outside the U.K. please send your contribution as U.S.\$1 or \$5 bills OR U.S. or F.S.M. Mint Postage stamps of any value up to and including 60¢)